



# Pacific Pump and Power

Godwin Pumps Distributor  
Rental \* Sales \* Service

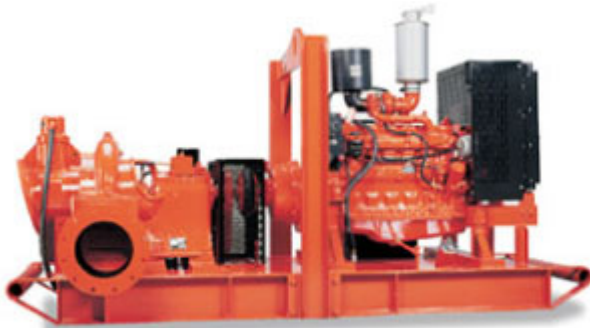


**FEATURE FOR SEPTEMBER 2007**

## **DPC300 CS Dri-Prime Pumps**

The Godwin DPC300 Critically Silenced automatic Dri-Prime 12" centrifugal pump has gained recognition as the industry leader in high volume bypass pumping. With flows to 5,000 gallons per minute and solids handling to 3.5" in diameter, the DPC300 moves large volumes of water while providing the ease of automatic priming to 28 feet. The convenience of a low profile discharge flange makes pipe connections easy and efficient.

*Right: Critically Silenced Unit  
Below: Non-Critically Silenced Unit*



The DPC300 pump has several unique features:

- Direct drive automatic priming 12" high volume centrifugal pump with vacuum priming compressor mounted to a diesel engine.
- All cast iron construction with 4 vane cast iron impeller.
- Application flexibility – will handle raw sewage, sludge and liquids with solids up to 3.5" diameter.
- Continuously operated "Godwin" air ejector priming device requiring no form of periodic adjustment or control.
- Dry running, oil lubricated, and mechanical seal with abrasion resistant solid silicon carbide interfaces.
- Solids handling swing check non return valve at pump discharge.
- Skid base incorporating integral overnight running fuel tank.
- Simple maintenance – normally limited to checking engine oil, compressor oil and seal lubrication.
- Balanced unit with centralized lifting bracket for easy handling.
- The critically silenced units are intended for use in any application where pumping is required and engine and other noise must be kept to a minimum. Sound levels are approximately 69 dBA at 30'.
- The enclosure consists of 14 gauge sheet metal lined with 1" and 2" layers of polydamp acoustical sound deadening material.
- The engine has a critical grade silenced muffler, silenced the priming exhaust, and isolated engine vibration to further reduce operating noise. Hinged, lockable doors provide convenient access to operating controls and service locations.

Pacific Pump and Power maintains a rental fleet of equipment ranging from 2" electric pumps to 12" diesel pumps. All ready for immediate dispatch, backed by technical expertise and reliable 24-hour service.

*Call 672-8198 or Visit us at Campbell Industrial: 91-503 Nukuawa Street, Kapolei*



# Pacific Pump and Power

Godwin Pumps Distributor

Rental \* Sales \* Service



## 40 Pumps in Our Rental Fleet

4800 FEET  
OF HOSE

★ 5700 FEET OF PIPE ★

Cherne  
Pipe Plugs

### **Dri-Prime Pumps – CD Series – 23 AVAILABLE**

*High Volume, Medium Head, Large Solids-Handling Capabilities*

**DPC300 12" Diesel, Up to 5000 gpm! Up to 115' of head, Critically Silenced**

CD225M 8" Electric Pumps, up to 3500 gpm, up to 120' of head, trailer mounted

CD 225M 8" Diesel, up to 3100 gpm, up to 183' of head, trailer mounted, Critically Silenced

CD 150M 6" Diesel, up to 1700 gpm, up to 160' of head, trailer mounted, Critically Silenced

CD 103M 4" Diesel, up to 1000 gpm, up to 170' of head, trailer mounted, Critically Silenced

CD 100M 4" Diesel, up to 750 gpm, up to 115' of head, trailer mounted

CD 80D 3" Diesel, up to 350 gpm, up to 93' of head, trailer mounted

CD 80M 3" Diesel, up to 450 gpm, up to 93' of head, trailer mounted

### **Dri-Prime Pumps – HL Series – 1 AVAILABLE**

*High Head and Jetting Pump with Solids-Handling Capabilities*

HL5M 6" Diesel, up to 1450 gpm, **Up to 500' of head!**

### **Hydraulic Submersible Pumps and Powerpacks - Heidra Series – 4 AVAILABLE**

HS 150V 6", Diesel, up to 1900 gpm, up to 160' of head, handling up to 5" solids

HS 100TD 4", Diesel, up to 800 gpm, up to 130' of head, handling up to 2" solids

### **Sub-Prime Electric Submersible Pumps – 9 AVAILABLE**

GSP 600SV, 8", up to 3650 gpm, up to 82' of head, handling up to 0.5" solids

GSP 160HV, 6", up to 1200 gpm, up to 115' of head, handling up to 0.5" solids

GSP 55, 4", up to 500 gpm, up to 75' of head, handling up to 0.33" solids

GSP 10-115, 2", up to 90 gpm, up to 60' of head, handling up to 0.33" solids

### **Wet-Prime Gasoline Trash Pumps – 2 AVAILABLE**

GTP80HX 3"

### **Diesel Generator Sets – 1 AVAILABLE**

26kW-R Series, Critically Silenced

### **Gasoline Generator Sets – 2 AVAILABLE**

3000, 5000 Watt, Portable Honda Model

### **Portable Light Towers – 1 AVAILABLE**

Godwin Light Tower, GLT 416, 4000 Watts, coverage of 5-7 acres

### **Road Ramp Crossings – 4 AVAILABLE**

8" Road Ramps

## 4", 6" & 12" ROAD RAMPS ON THEIR WAY!!

### **Pump Accessories:**

From 2" – 12" - Suction Screens, Bends, Step Bows, Adaptors, Increases and Reducers and More!

### **Pump Parts:**

An extensive inventory of common wear parts for the pumps is already in stock.

*Call 672-8198 or Visit us at Campbell Industrial: 91-503 Nukuawa Street, Kapolei*